



FISU Healthy Campus



Main goals

- Develop and improve health and well-being of the Campus communities
- Certify universities in the scope of well-being with an **international label**
- Share globally the **best practices** of universities in the seven Healthy Campus domains



The background is a solid dark blue color. On the left side, there are several overlapping, curved, light blue shapes that resemble stylized waves or abstract architectural elements. These shapes are layered, with some appearing in front of others, creating a sense of depth and movement.

Healthy Campus Standard



HEALTHY CAMPUS STANDARD



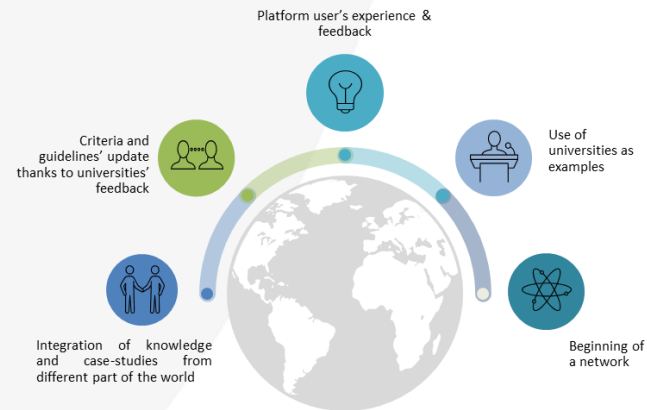
QUARTIER UNIL | BÂTIMENT SYNATHLON
CH-1015 LAUSANNE | SWITZERLAND
TEL: +41 21 692 6400
fis@fis.net | www.fis.net | www.fis.tv

DEPARTMENT
HEALTHY CAMPUS AND
UNIVERSITIES RELATIONS
RELEASE DATE
MAY 2020

FISU
INTERNATIONAL
UNIVERSITY
SPORTS
FEDERATION

7 pilot universities

- Peking University, China
- University of Lausanne, Switzerland
- University of Western Australia, Australia
- University of Johannesburg, South Africa
- University of Turin, Italy
- RUDN University, Russia
- National University of La Matanza, Argentina



LIST OF EXPERTS

The following experts participated in the elaboration of this standardisation scheme

Name	First Name	Country	Organisation
Baldwin	Mark	The Netherlands	Utrecht University
Bazavluk	Sergey V.	Russia	RUDN Moscow
Capranica	Laura	Italy	Università degli Studi di Roma "Foro Italico"
Carty	Catherine	Ireland	Institute of technology Tralee
Carvalho	Joana	Portugal	Universidade do Porto
Dalrymple	Alister	France	Evaleo Association
Dumon	Detlef	Germany	ICSSPE
Farpour-Lambert	Nathalie	Switzerland	European Association for the Study of Obesity
Fitzpatrick	Ian	Australia	University Western Australia, Sport department
Gordin	Emiliano	Argentina	Federación del Deporte Universitario Argentino
Gross	Michael	Switzerland	Evaleo Association
Hogg	Conrad	Australia	UWA Student Guild
Lafin	Mike	United Kingdom	Global Sports Strategies
Luttik	Joke	Netherlands	Wageningen University & Research
Lynen	Peter	Germany	RWTH Aachen University
Machado	Paulo	Portugal	University of Minho
Mahlangu	Nomsa	South Africa	University of Johannesburg
Matthey	Sonia	Switzerland	Université de Lausanne
Messmer	Gabriel	Switzerland	Evaleo Association
Montiel	Pedro	Spain	Universidad de Málaga
O'Sullivan	Erin	USA	NIRSA: Leaders in Collegiate Recreation
Parker	Mel	United Kingdom	Middlesex University
Petruzzi	Sandro	Italy	Università Degli Studi di Torino
Schischlik	Alexander	France	UNESCO
Watts	Pam	USA	NIRSA: Leaders in Collegiate Recreation
Willumsen	Juana	Geneva	WHO, World Health Organization
Yonemura	Akemi	France	UNESCO
Zhonghui	He	China	University of Peking



Better Universities with better prepared generations

Better Well-Being

Better World



Investigation, Recommendations, Good Practices, Benchmarking.



Healthy Campus Programme is aligned with SDGs 2030 established by the UN to build a better world for people and our planet, as well the guidelines of the Kazan Action Plan (UNESCO) and the Global Action Plan on Physical Activity 2018- 2030 (WHO).



FISU Healthy Campus

7 domains



Physical activity and sport

Infrastructure, organises sport competitions, sport for all



Nutrition

Free water, nutrition counselling, healthy catering



Disease prevention

Medical check-up, counselling



Mental and social health

Discussions with students about struggles and illness, motivation



Risk behavior

prevention programmes



Sustainability and social responsibility

reduce environmental impact, mobility, carbon footprint



Healthy Campus Management

cohesion, communication, leadership

100 criteria divided into:

- **Healthy Campus management** (33 criteria)
 - Context, literature and needs (4 criteria);
 - Leadership (4 criteria);
 - Vision strategy and action plan (3 criteria);
 - Role, responsibilities (3 criteria);
 - Resources (3 criteria);
 - Communication (2 criteria);
 - Stakeholders and network (4 criteria);
 - Events, programmes and services (5 criteria);
 - Evaluation and improvement (5 criteria);
- **Physical activity and sport** (33 criteria);
- **Nutrition** (8 criteria);
- **Disease prevention** (7 criteria);
- **Mental and social health** (8 criteria);
- **Risk behaviour** (5 criteria);
- **Environment, sustainability & social responsibility** (6 criteria).

The background is a solid dark blue color. On the left side, there are several overlapping, curved, light blue shapes that resemble stylized waves or abstract architectural elements. These shapes curve from the bottom left towards the top right, creating a sense of movement and depth.

Healthy Campus Platform

Login



HEALTHY
CAMPUS

Log in [Sign up](#)

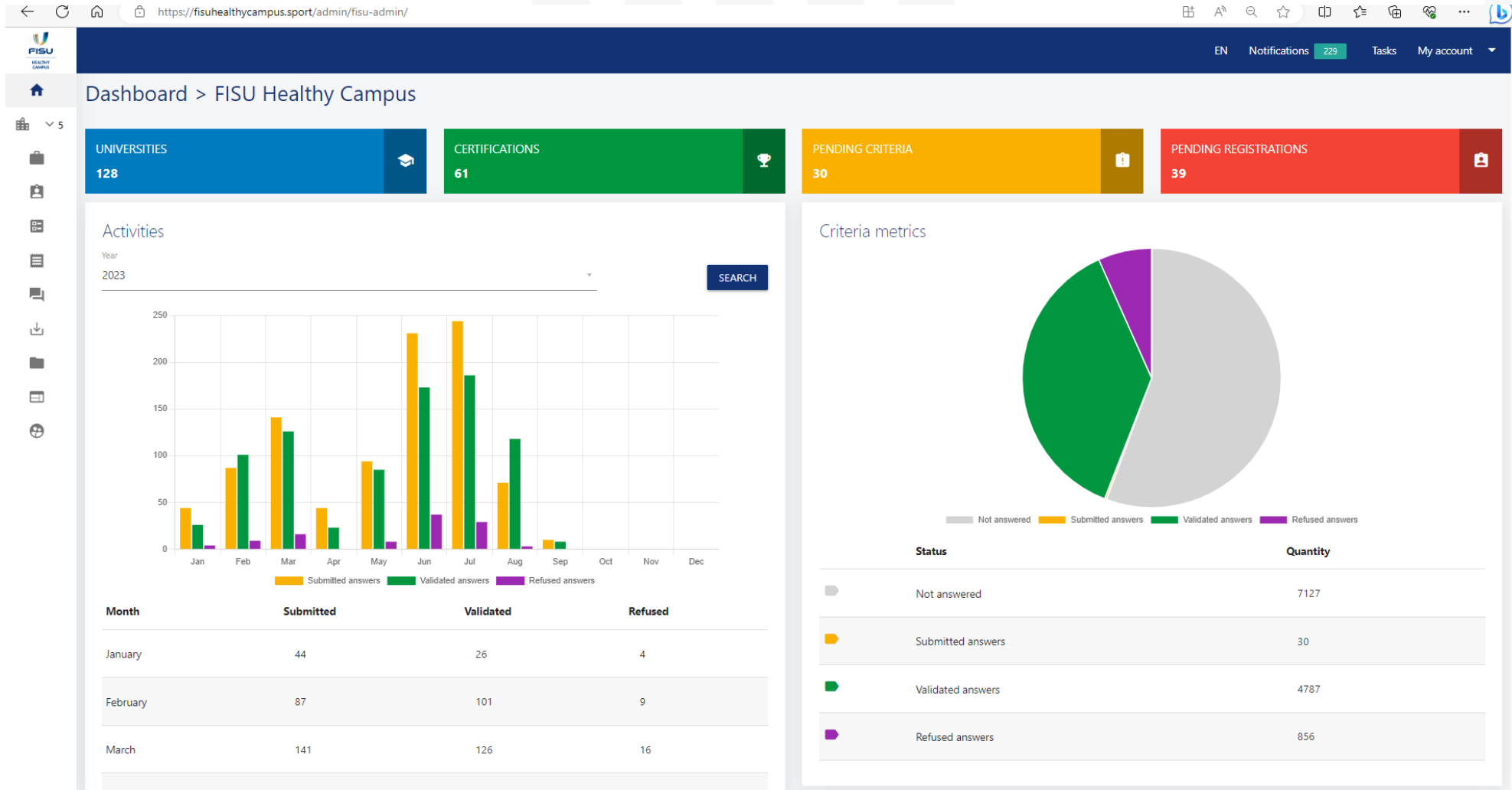
Email address

Password

LOG IN

[Forgotten password](#)

Healthy Campus Platform



Answer criteria

#54	The university promotes its physical activities and sports to alumni of the university.	Validated answer	☆ 👁
#55	The university organises or collaborates with partners in the organisation of sports events open to the local community.	Validated answer	☆ 👁
#56	The university organises sports competition within the university.	Validated answer	☆ 👁
#57	The university or its clubs/students participate(s) at least in one sport in a national university sports competition.	Validated answer	☆ 👁
#58	The university organises and participates in the organisation of national or international sports events or championships.	Validated answer	☆ 👁
#59	The university shall use these events as catalyst for the implementation of the Healthy Campus approach and, more generally, healthy lifestyle related activities and programmes.	Not answered	
#60	The university offers a dual career programme.	Validated answer	☆ 👁
#61	The university develops volunteer programmes to support events and sports activities.	Validated answer	☆ 👁



Evidences

#56 The university organises sports competition within the university.

Validated answer

Validated answer

Validated answer

Not answered

Validated answer

Validated answer

Validated answer

Validated

Supporting document

Description

File

Version

Updated at

By

Status

Actions

Missing

Missing

Missing

Missing

Missing

Missing

Missing

Missing

Missing



social sport



at murdoch

Weekly social competitions are available in:

- Mixed Netball (Monday)
- Mixed Ultimate (Tuesday)
- Men's/Women's 3v3 Basketball (Tuesday)
- Mixed Touch Rugby (Thursday)

Games begin the week of March 8th and we welcome registrations from both teams and individuals.

For more info and to get a registration form, email sports@murdoch.edu.au or go to the Sports and Rec Centre (415) before March 4th.





MURDOCH SPORTS

For more info on social sport scan the QR code below or go to:

<https://www.murdoch.edu.au/murdoch-sports/>

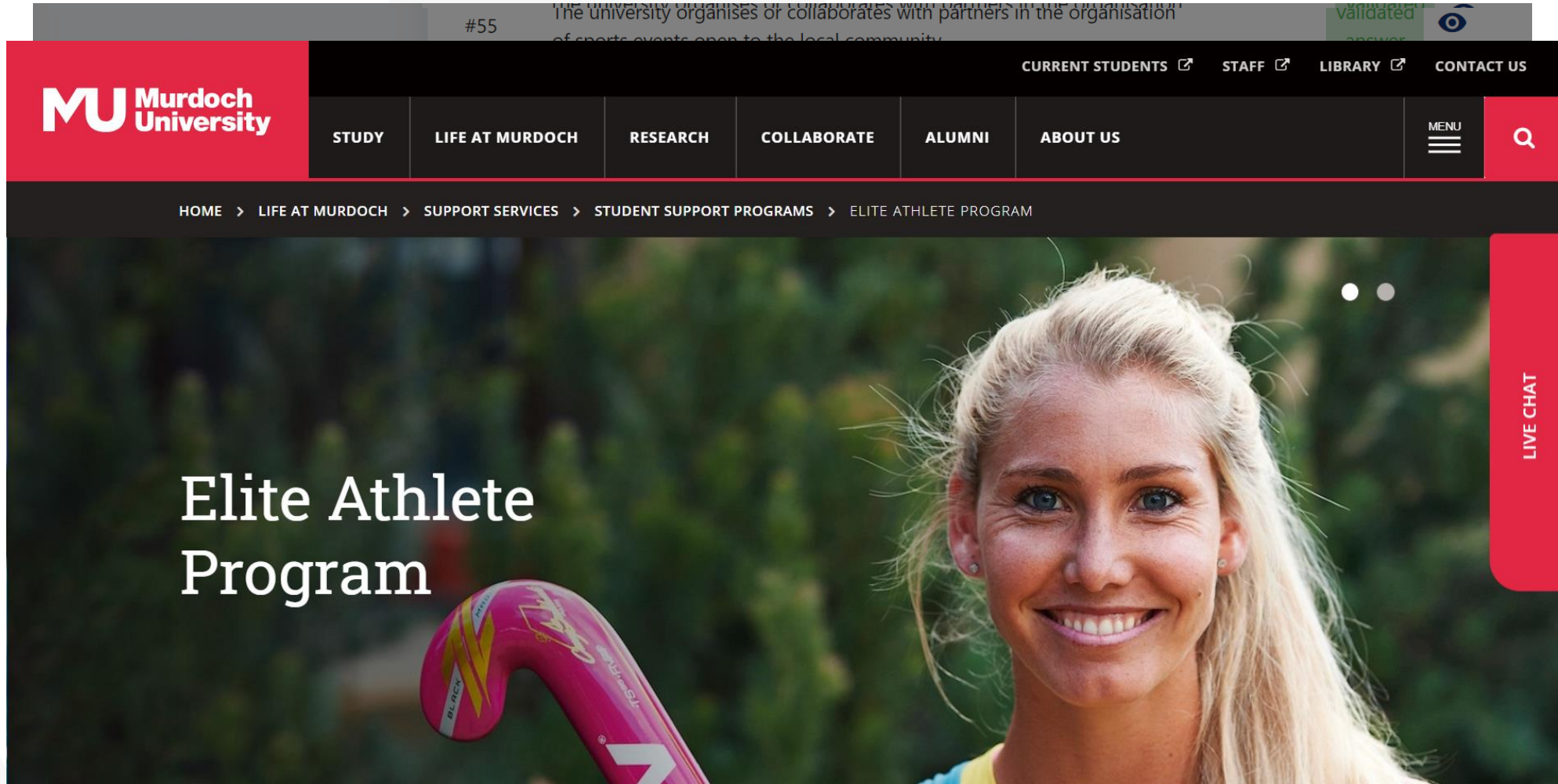


Find us on  @vikingsmurdoch



activities (mountain forest river beach

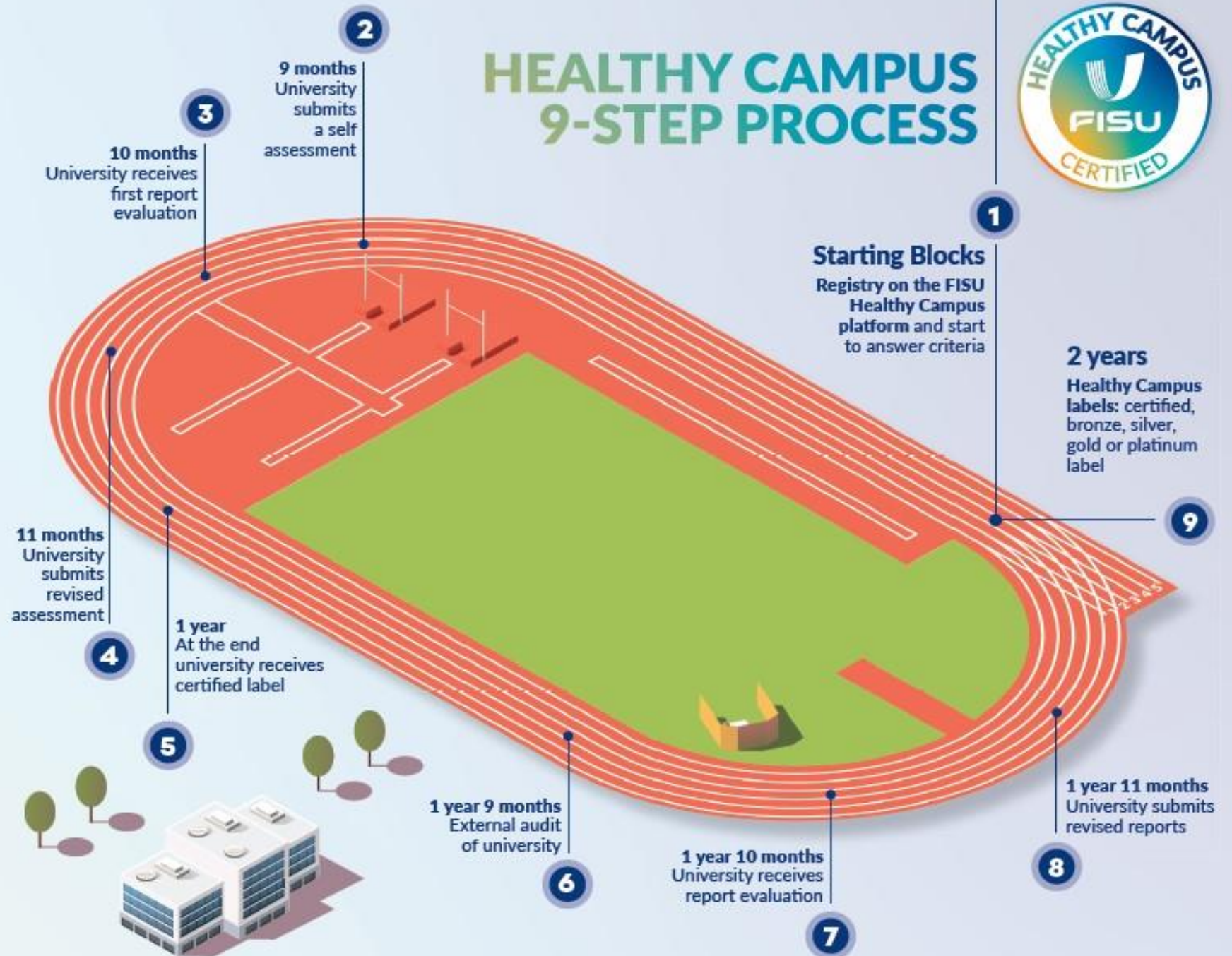
Answer





Process of certification

2 years process



Labels

The universities will be ranked according to their score with respect to the criteria, which will be called “Label Status”:

- **Certified:** 40-50 criteria validated;
- Certified **Bronze:** 51-65 criteria validated;
- Certified **Silver:** 66-80 criteria validated; and at least 1 for each of the domains;
- Certified **Gold:** 81-90 criteria validated; and at least 2 for each of the domains;
- Certified **Platinum:** 91-100 criteria validated; and at least 3 for each of the domains.



Report

EVALUATION AND AUDIT REPORT
FISU Healthy Campus Programme



Date 2021-10-30

Audited University:	Name of University – Country
	Adress:
	University Institutional Responsible: Ms/Mr
	University Operational Responsible: Ms/Mr
	Evaluator/Auditor: Fernando Parente
	Evaluator/Auditor: Amandine Volpato
	Year/Month of registration in the programme: 2020/May
	Evaluation Report <input checked="" type="checkbox"/>
	Audit Report <input type="checkbox"/>
Scope of the audit:	Healthy Campus Management System, Events, Services Planning and production in the following areas: - Healthy Campus Management; - Physical Activity and Sport; - Nutrition; - Disease Prevention; - Mental and Social Health; - Risk Behaviour; - Environment, Sustainability and Social Responsibility
HEALTHY CAMPUS STANDARD CRITERIA (2020)	VC NC IO BP
1. Healthy Campus Management (33)	7 - - -
1.1. Context, literature and needs (4)	- - -
1.2. Leadership (4)	- - -
1.3. Vision, strategy and action plan (3)	- - -
1.4. Role and responsibilities (3)	- - -
1.5. Resources (3)	1 - - #17
1.6. Communication (2)	1 - - #18
1.7. Stakeholders and network (4)	2 - - #26
1.8. Events, programmes and activities (5)	3 - - -
1.9. Evaluation and improvement (5)	- - - -
2. Physical Activity and Sport (33)	22 - - #46, #48, #5 #60, #62
3. Nutrition (8)	3 - - #71
4. Disease prevention (7)	4 - - #80
5. Mental and social health (8)	8 - - #87
6. Risk behaviour (5)	3 - - #93
7. Environment, sustainability & social responsibility (6)	5 - - #96, #97
Total (100)	52 - - -

Management	SDG Achieved	Physical activity and sport	SDG Achieved	Nutrition	SDG Achieved	Disease prevention	SDG Achieved	Mental and social health	SDG Achieved	Risk behaviour	SDG Achieved	Environment, sustainability and social responsibility	SDG Achieved
1	-	34	-	67	3,4	75	-	82	3	90	3	95	1,2,3,10
2	-	35	16,17	68	-	76	-	83	3	91	-	96	17
3	-	36	16,17	69	-	77	3	84	3,4	92	-	97	3,15
4	-	37	-	70	-	78	-	85	3,4	93	3,5,16	98	3,6,7,12,13,14,15
5	-	38	-	71	2,3,6	79	3	86	3	94	3,5,11,16	99	6,7,9,11,12,13,17
6	-	39	-	72	2,3,4,16	80	3	87	3	-	-	100	-
7	-	40	9,10,17	73	-	81	3	88	3	-	-	-	-
8	-	41	9,10,17	74	-	-	-	89	3	-	-	-	-
9	-	42	9,10,17	-	-	-	-	-	-	-	-	-	-
10	-	43	9,17	-	-	-	-	-	-	-	-	-	-
11	-	44	3,9,10,16	-	-	-	-	-	-	-	-	-	-
12	-	45	9,10,17	-	-	-	-	-	-	-	-	-	-
13	-	46	3,4,10	-	-	-	-	-	-	-	-	-	-
14	-	47	-	-	-	-	-	-	-	-	-	-	-
15	-	48	3,4,10	-	-	-	-	-	-	-	-	-	-
16	-	49	-	-	-	-	-	-	-	-	-	-	-
17	8,11,16,17	50	3,4,10	-	-	-	-	-	-	-	-	-	-
18	16,17	51	-	-	-	-	-	-	-	-	-	-	-
19	-	52	-	-	-	-	-	-	-	-	-	-	-
20	-	53	3,4	-	-	-	-	-	-	-	-	-	-
21	-	54	3,4	-	-	-	-	-	-	-	-	-	-
22	16,17	55	16,17	-	-	-	-	-	-	-	-	-	-
23	16,17	56	16,17	-	-	-	-	-	-	-	-	-	-
24	-	57	16,17	-	-	-	-	-	-	-	-	-	-
25	-	58	16,17	-	-	-	-	-	-	-	-	-	-
26	16,17	59	-	-	-	-	-	-	-	-	-	-	-
27	3,4,5,6,7,10,11,12,13,14,15,16,17	60	4	-	-	-	-	-	-	-	-	-	-
28	1,16,17	61	4,11,16,17	-	-	-	-	-	-	-	-	-	-
29	-	62	3,4,16	-	-	-	-	-	-	-	-	-	-
30	-	63	3,10	-	-	-	-	-	-	-	-	-	-
31	-	64	3,4,10,11	-	-	-	-	-	-	-	-	-	-
32	-	65	-	-	-	-	-	-	-	-	-	-	-
33	-	66	-	-	-	-	-	-	-	-	-	-	-



VC: Validated criteria
NC: Nonconformities
IO: Improvement Opportunities
BP: Best Practices



INTERNATIONAL
UNIVERSITY
SPORTS
FEDERATION

CERTIFICATE

FISU - International University Sports Federation certifies the

University of Lausanne

UNIL - Centre Unicentre 1015 Lausanne, Switzerland

with the

FISU HEALTHY CAMPUS PLATINUM LABEL

in the domain of physical activity and sport, mental and social health, nutrition, disease prevention, risk behaviour, environment, sustainability and social responsibility, and management of the programme, meets the requirements of the standard.



Leonz EDER
FISU Acting President

Eric SAINTROND
FISU General Secretary

Date: 27 May 2022

FISU Quartier UNIL-Centre, Bâtiment Synathlon, 1015 Lausanne, Switzerland



Best Practices



UNIVERSITY OF JOHANNESBURG

WEBSITE WWW.UJ.AC.ZA



Name of the project
UJ Clean Up Campaign



Domain
Environment, sustainability and social responsibility



Criteria
#99 The university shall plan, implement and evaluate specific actions to improve the sustainability and use of infrastructure and resources.



Keywords
Clean-up, Environment, Environmental Sustainability, No Littering, Clean Up Campaign, Recycle



Target & Stakeholders
Students and Staff



Time & Frame
Weekly



Team & Staff
Students, Staff, Operations Department, City of Johannesburg Municipality



Description
The UJ Clean Up campaign is aimed at keeping the campuses clean and raising awareness on clean working and teaching and learning environments. The materials picked up are placed in specified recycle bins. All staff and students are involved.



Main Goals
To keep a healthy, clean environment. To teach the campus community to respect the environment. To encourage people to recycle plastics, bottles & other waste materials. To encourage the campus community to make UJ a cleaner & sustainable environment.



Motivation & Vision
Keeping a clean studying, working and living environment is important for individual and collective well-being. Clean environments are not only important for people, but they are also important for the natural ecosystem.



Evaluation
Many people have stopped littering. People have adopted the use of bins provided.



Lessons learned
People find it embarrassing to throw away plastics in open spaces. The Clean Up campaign has improved the quality of life on campuses.



Recommendations
All persons must be encouraged to use bins provided in public spaces. Littering should be punishable if found/caught in the act.



Clean Up campaign at UJ



Clean Up campaign partnership with the City of JHB



Clean Energy Initiatives

Fees

The certification process fees are as follow for the first 2 years cycle

- € 1,000 first year, self evaluation
- € 3,000 2nd year, audit

FISU offers a 50% fee discount in the second year of each Healthy Campus cycle for universities, if the NUSF and the national government agree on a MoU with FISU, establishing this programme as a national development factor for well-being in higher education institution of the country.

See what is included in your exclusive programme access:

- FISU Healthy Campus Platform and standard document
- Consulting good practices
- Certification process technical support and monitoring
- An online training session (Healthy Campus and auditors programme)
- Annual self-assessment report (first year of each cycle)
- Local audit and report (second year of each cycle)
- Certification diploma
- Certification plate per campus
- Advantageous conditions to access to FISU educational and training events in

**Each university will
nominate 2 auditors**

Why sign up?

WHY SIGN UP?

Top 5 reasons



Work towards **UN SDGs** in an organized manner & get into leading university rankings.



Learn **best practices** from major universities around the world.



Encourage **cohesion and coordination** among all your departments & services.



Put a stop to 'drop out' trends and help the students **love campus life**.



Improve the image and **credibility** of your university with the certified international label.



Questions?

Thank you

